

Solenoid Pilot Valve



General

- **Function:** 3/2 way, 5/2 way
- **Voltage:** 110VAC, 230VAC, 24VDC, 24VAC
- **Housing Material:** Polyamide, anodized aluminum, brass
- **Pressure:** 150psi
- **Protection Class:** IP65
- **Manual Override:** Integrated
- **Duty Cycle:** 100%
- **Mount:** Direct or NAMUR

Double Acting Pilot Valves

Valve Type	Size	Solenoid Type
230-233	All	PV5470
285-288	All	PV5470
240	All	PV5470
244	All	PV5470
DIASTAR 604/605	All	PV5470
DIASTAR Ten	All	PV5470
DIASTAR 025	All	PV5470

The above/right tables show the suggested pilot valve for each valve type offered by GF. Alternative models should be used if the operator desires faster or slower than standard cycle times.

Sample Specification

GF's Pilot Valve family shall be single coil solenoid valves and utilized with a GF pneumatically actuated valve. The actuator mount shall be either be direct or NAMUR compliant. The media shall be clean, dry, compressed air. The protection class shall be IP65 and the duty cycle shall be 100 percent.

Spring Return Pilot Valves

Valve Type	Size	Solenoid Type
230-233	3/8"-2" (d16-d63)	PV94
230-233	2 1/2"-4:	PV95
285-288	All	PV94
240	All	PV95
244	All	PV95
DIASTAR 604/605	All	PV95
DIASTAR Six	All	PV94
DIASTAR Ten	1/2"-1 1/4" (d20-d40)	PV94
DIASTAR Ten	1 1/2"-2" (d50-d63)	PV95
DIASTAR TenPlus	1/2"-1" (d20-d32)	PV94
DIASTAR TenPlus	1 1/4"-2" (d40-d63)	PV95
DIASTAR 025	2 1/2"-6" (d75-d160)	PV95

PV94

- **Function:** 3/2 ways
- **Voltage:** 110VAC, 230VAC, 24VDC, 24VAC
- **Voltage Tolerance:** $\pm 10\%$
- **Pressure:** 150psi
- **Flowrate Air:** 49 in³/s
- **Housing Material:** Polyamide
- **Banjo Bolt Material:** Nickel plated brass
- **Seal Material:** NBR
- **Manual Override:** Integrated
- **Duty Cycle:** 100%
- **DIN Plug:** DIN EN 175301-803 Form C
- **Coil Output:** 4W (AC/DC)
- **Startup Power:** 9VA (AC), 4W (DC)
- **Operation Power:** 6VA (AC), 4W (DC)
- **Response Time Open/Close:** 7-12 ms
- **Process Temperature:** 14 °F to 212°F
- **Ambient Temperature:** 14 °F to 131°F
- **Actuator Connection:** G $\frac{1}{8}$ "
- **Weight:** 135 g
- **Protection Class:** IP65

PV94



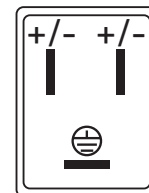
PV95



PV95

- **Function:** 3/2 ways
- **Voltage:** 110VAC, 230VAC, 24VDC, 24VAC
- **Voltage Tolerance:** $\pm 10\%$
- **Pressure:** 150psi
- **Flowrate Air:** 122 in³/s
- **Housing Material:** Brass
- **Pneumatic Connector Material:** Anodized aluminum
- **Banjo Bolt Material:** Brass
- **Seal Material:** FPM
- **Manual Override:** Integrated
- **Duty Cycle:** 100%
- **DIN Plug:** DIN 43650 Form A
- **Coil Output:** 8W (AC/DC)
- **Startup Power:** 24VA (AC), 8W (DC)
- **Operation Power:** 17VA (AC), 8W (DC)
- **Response Time Open:** 18 ms
- **Response Time Close:** 22 ms
- **Process Temperature:** 14 °F to 212°F
- **Ambient Temperature:** 14 °F to 131°F
- **Actuator Connection:** G $\frac{1}{8}$ " with adapter to G $\frac{1}{4}$ "
- **Weight:** 420 g
- **Protection Class:** IP65

Wiring

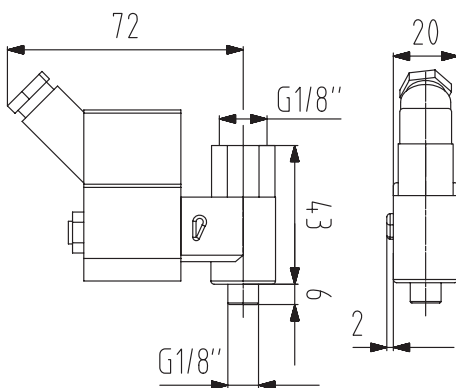


Note: No polarity

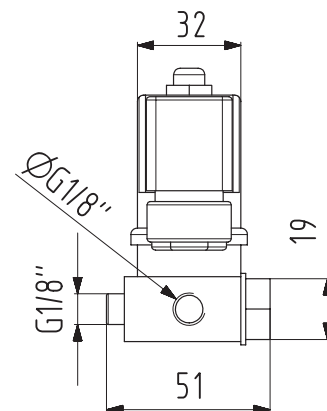
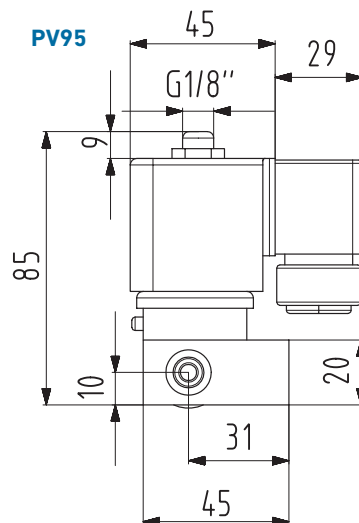
Dimensions

The following dimensions are shown in millimeters unless otherwise specified

PV94



PV95

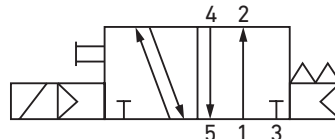


PV5470

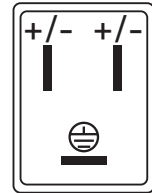
- **Function:** 5/2 way
- **Design:** Single coil, spring return
- **Voltage:** 110VAC, 220VAC, 24VDC
- **Voltage Tolerance:** -15%/+10%
- **Pressure:** 150psi
- **Seal Material:** NBR
- **Manual Override:** Integrated
- **Duty Cycle:** 100%
- **Operation Power :** 5VA @ 60 Hz, 5.6VA @ 50Hz (AC)
- **Nonoperating Power:** 2.3VA @ 60 Hz, 3.4VA @ 50 Hz (AC)
- **Operating Power:** 1.8W (DC)
- **Temperature:** 14 °F to 140°F
- **Pneumatic Connection:** G $\frac{1}{4}$ "
- **Actuator Connection:** NAMUR compliant
- **Weight:** 320 g
- **Protection Class:** IP65



Control



Wiring



Note: No polarity

Optional Feature

The PV5470 is available with double coil functionality. Standard units utilize a single coil to move a piston to the active state and a spring to return it to the deactive state. The double coil replaces the spring with an additional coil and DIN plug.



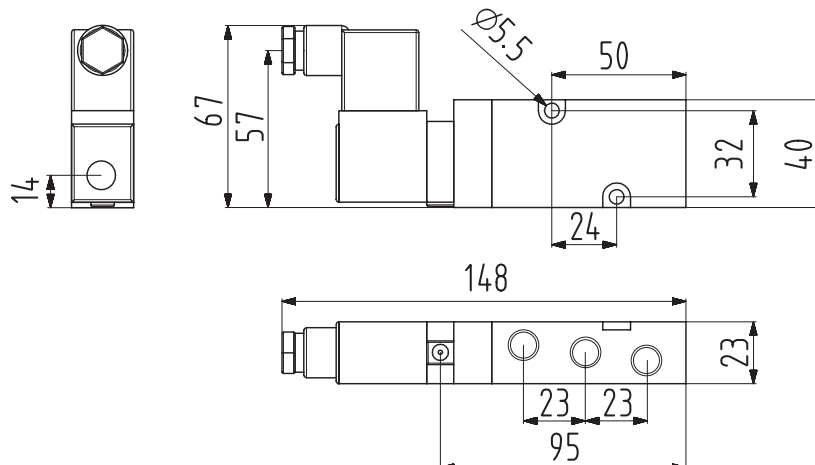
Accessory

GF offers a pneumatic port NAMUR adapter to mount PV5470 and MLN532 pilot solenoid valves to actuators that are not NAMUR compliant. This adapter is compatible with every pneumatic actuator in the GF product line.



Dimensions

The following dimensions are shown in millimeters unless otherwise specified



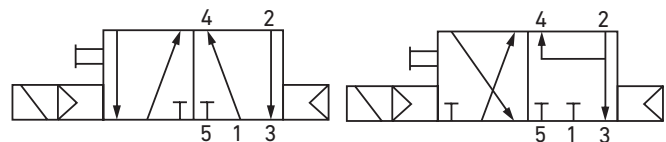
MLN532 Speed Control

- **Function:** 5/2 way and 3/2 ways
- **Speed Control:** Two port throttling valves
- **Design:** Single coil, spring return
- **Voltage:** 110VAC, 230VAC, 24VDC, 24VAC
- **Voltage Tolerance:** $\pm 10\%$
- **Pressure:** 150psi
- **Flowrate Air:** 966 in³/s
- **Housing Material:** Anodized aluminum
- **Banjo Bolt Material:** Nickel plated brass
- **Seal Material:** NBR
- **Manual Override:** Integrated
- **Duty Cycle:** 100%
- **Operation Power:** 5VA (AC), 3W (DC)
- **Response Time Open/Close:** 7-12 ms
- **Temperature:** 14 °F to 122°F
- **Pneumatic Connection:** G $\frac{1}{4}$ "
- **Actuator Connection:** NAMUR compliant
- **Protection Class:** IP65

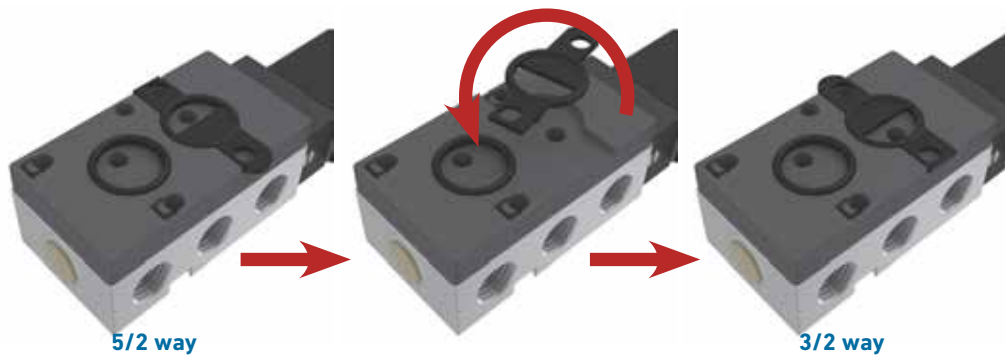


5/2 way

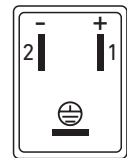
3/2 way



Control



Wiring



Dimensions

The following dimensions are shown in millimeters unless otherwise specified

